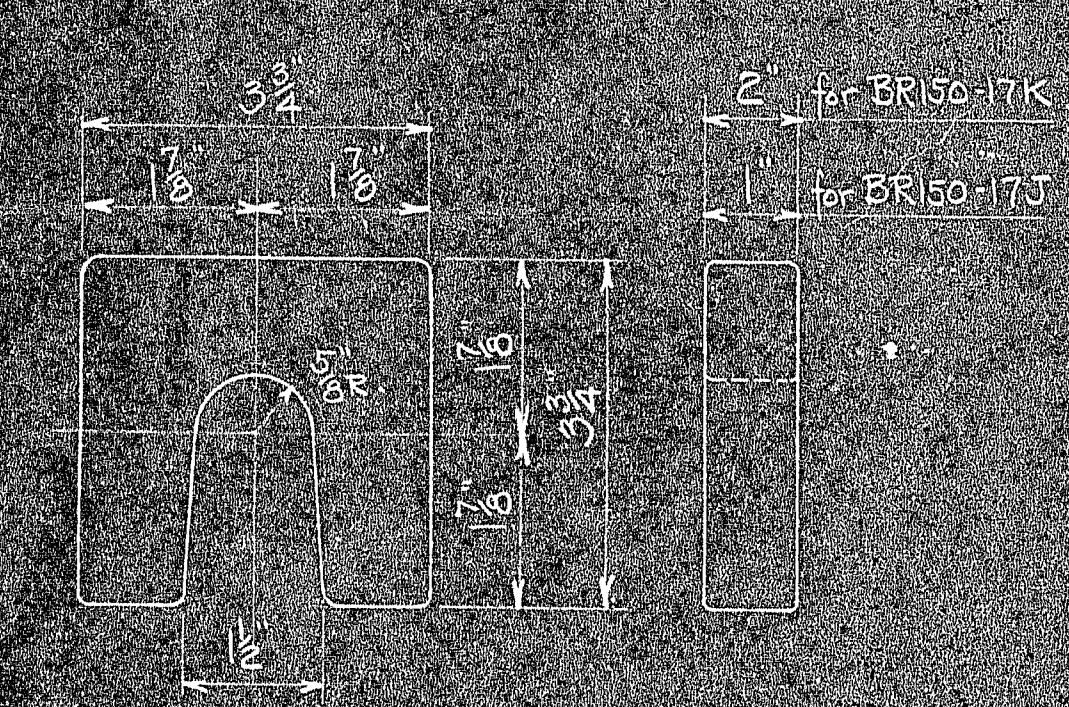
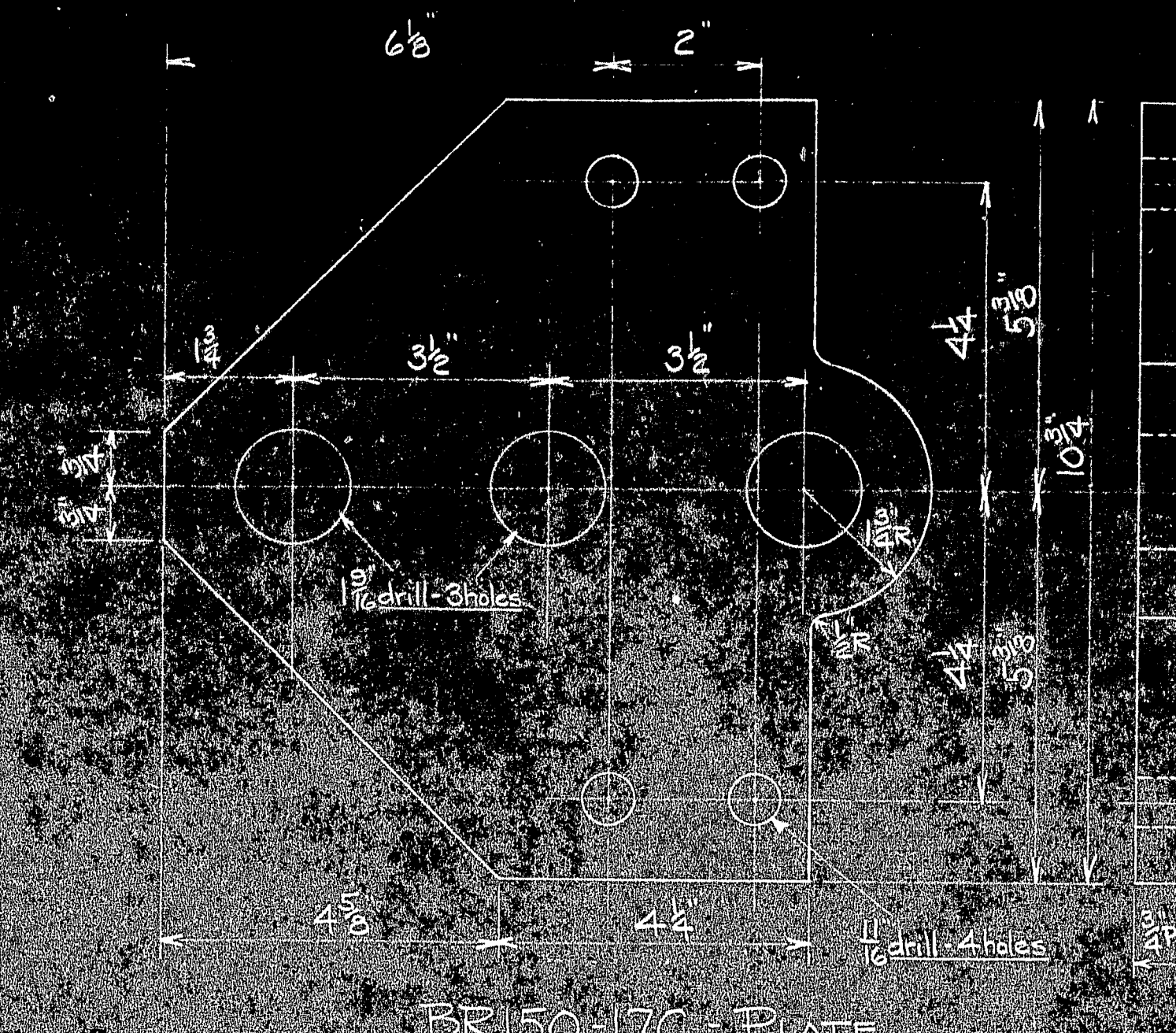


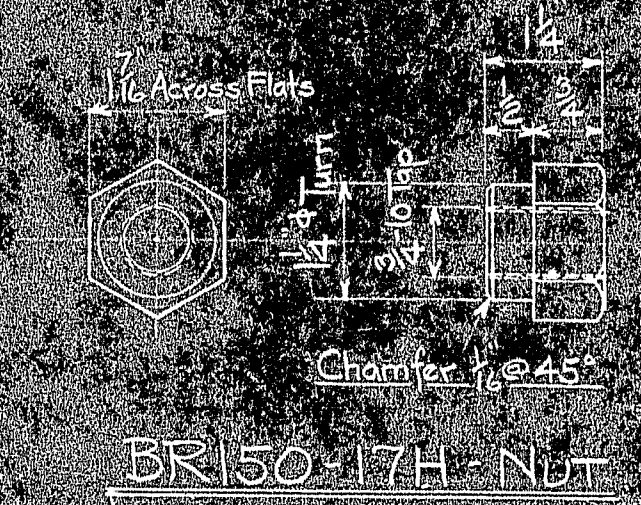
BR150-17A - ANGLE - AS SHOWN
BR150-17B - ANGLE - OPP. HAND



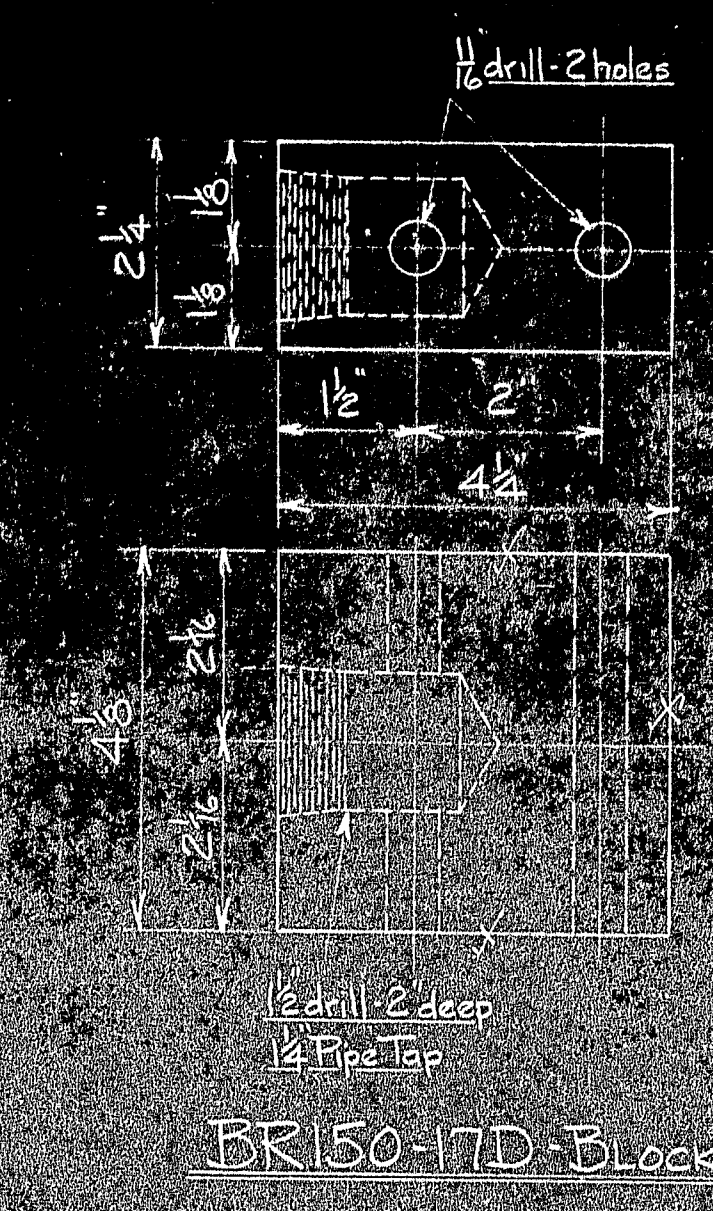
BR150-17J - SHIM - 1 THICK
BR150-17K - SHIM - 2 THICK



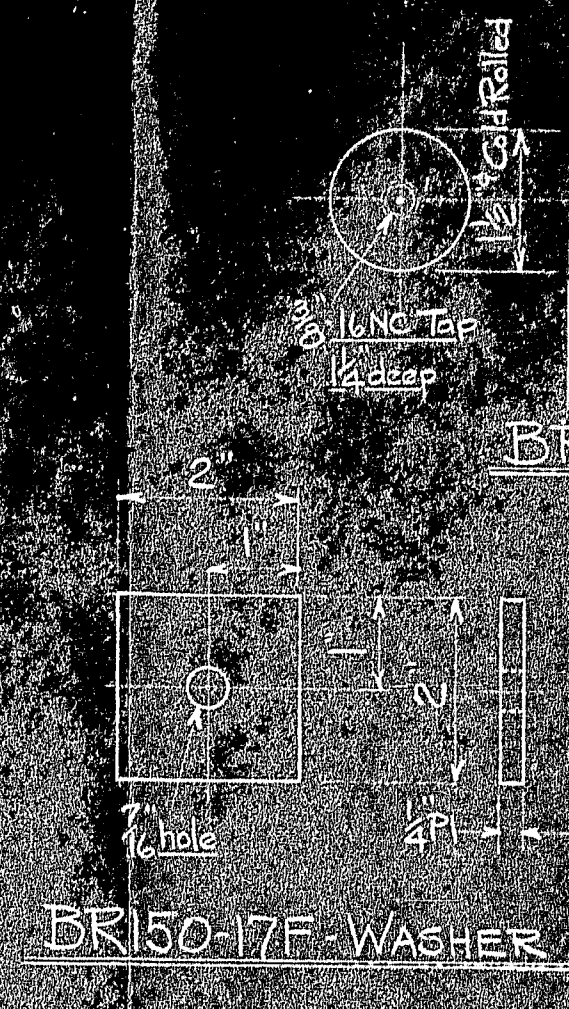
BR150-17C - PLATE



BR150-17H - NUT



BR150-17D - BLOCK



BR150-17E - PIN



BR150-17F - WASHER
BR150-17G - BAR BOLT

MARK	REQ'D	MAT'L	REQ. NO.	NAME	REMARKS
BR150-17A	12	-	5577-80	Blackhawk 4 1/2 Gauge *Z299	
BR150-17B	24	-	5577-80	Blackhawk Hoses Assemblies *Z 571	
BR150-17C	12	-	5577-80	Blackhawk Adapters *P-16 99	
BR150-17D	12	-	5577-80	Blackhawk Hand Operated Pump *P-76	
BR150-17E	24	-	5577-80	Blackhawk 10 Ton Ram *R-159	
BR150-17F	12	-	5620	Vulcan Eye Bolt *53 Threaded Shank and nut	
BR150-17G	24	-	5620	1/4 Close Pipe Nipple	
BR150-17H	38	C.I.	5629	Shim	
BR150-17J	38	C.I.	5629	Shim	
BR150-17K	38	Steel	5629	Nut	
BR150-17L	48	See Note	5629	Bar Bolt	
BR150-17M	12	Steel	5629	Washer	
BR150-17N	12	See Note	5629	Pin	
BR150-17O	24	Steel	5629	Block	
BR150-17P	24	Steel	5629	Plate	
BR150-17Q	12	Steel	5629	Angle - opp. hand	
BR150-17R	12	Steel	5629	Angle - as shown	

BR150-16 Assembly of Jacking Equipment		DWG. NO.		TITLE		REFERENCE DRAWINGS	
APPROVED		SCALE 1" = 1'-0"		SERIAL		SHEET	
CH. DR.		DES. DR.		TR.		CH.	
BY		DATE		BR150		17	

